

Welcome to OpenTelemed

Welcome to the future of healthcare delivery with OpenTelemed. Established in 2019, our organization swiftly adapted to the shifting landscape of healthcare, offering a suite of telehealth solutions that align with stringent guidelines set by respected authorities such as Human Health Services and the Federal Communication Commission. OpenTelemed's dedication to excellence and compliance has positioned us as pioneers in the digital transformation of patient care.

Our comprehensive digital platform caters to a complete array of telehealth services, ensuring secure and efficient communication between healthcare providers and patients. Tailored for both iOS and Android devices, our applications feature encrypted website integrations for appointment booking, electronic medical records (EMR), and patient portals. Furthermore, we offer collaborative opportunities with physicians, billing contractors, insurance credentialing services, and even comprehensive telehealth training programs.

By joining forces with an impressive network of partners—including insurance TPAs, FCC networks, and nonprofit hospitals—we provide an influx of 200-500 patients per month to our practitioners. This collaborative ecosystem not only streamlines the delivery of healthcare services but also ensures a consistent patient base for our telehealth offerings. Delve into the realm of OpenTelemed where innovation, trust, and healthcare excellence converge.



Join the Telehealth Revolution with OpenTelemed

OpenTelemed is redefining the future of healthcare through its commitment to tech-enabled medicine and patient care. Since its inception in 2019, this privately held organization has drawn upon *Human Health Services (HHS)*, *Office of Inspector General (OIG)*, and *Federal Communication Commission (FCC)* guidelines to establish a cutting-edge digital telehealth platform. The platform's comprehensive suite, including an **encrypted website, sophisticated mobile applications for both iOS and Android**, is the epitome of patient-centered care.

The range of features these tools incorporate is vast; appointment booking, electronic medical records (EMR), and a patient portal create a seamless experience for users. For providers, collaboration with physicians, billing contractors, and insurance credentialing streamline the operational aspects of healthcare delivery. Through OpenTelemed, **200-500 patients per month** gain access to the future of healthcare—a testament to the platform's efficacy and outreach.

OpenTelemed's Network: Catalyzing Growth in Telehealth

Expanding its impact, OpenTelemed has forged strong connections with network partners—including **insurance Third Party Administrators (TPA), FCC networks, and non-profit hospitals**. These collaborations ensure a steady referral of patients for telehealth services, further amplifying the reach and accessibility of the platform.

OpenTelemed isn't just a platform; it's a movement. It mobilizes the potential for **telehealth to deliver 60% of preventive care management**, thereby serving an estimated 199.2 million people. Currently, the scarcity of medical professionals – with an average ratio of **1:1500 practitioners** – poses a significant barrier. OpenTelemed bridges this gap, contributing to the widespread adoption of telehealth, which boasts the potential to prevent up to **75% of life-threatening diseases** and deaths nationwide.

The organization extends an invitation to a wide array of professionals, including medical assistants, registered nurses, dietitians, nutritionists, life coaches, and even students, encouraging them to partake in the journey towards a healthier nation. OpenTelemed empowers these professionals through training in telehealth, lifestyle management, holistic medicine, and yoga, ensuring they are equipped to deliver comprehensive care.

Debunking Telehealth Myths

○ **Myth: Telehealth is too new to trust**

The perception that telehealth is a novel and untested approach to healthcare is inaccurate. Although recent technological advancements have enhanced its capabilities, the concept of remote medical care dates back to the 1960s. Recognizing its potential early on, healthcare professionals have been refining telehealth practices for decades, ensuring reliable and effective patient care.

○ **Myth: In-person care is superior to telehealth**

Many harbor the misconception that telehealth services pale in comparison to traditional in-person consultations. However, telehealth platforms are staffed by board-certified and properly credentialed healthcare professionals. Studies corroborate that telehealth delivers quality care, enhances access, and promotes positive health outcomes effectively matching the standards of in-person visits.

○ **Myth: Telehealth only suits urgent care scenarios**

Contrary to this myth, telehealth is a versatile tool that encompasses a wide spectrum of healthcare services. It's not only a resource for urgent care but also extends to primary care, specialty consultations, mental health support, and routine follow-ups. This adaptability allows patients to receive comprehensive healthcare irrespective of their location or mobility.

○ **Myth: Telehealth is complicated and economically burdensome**

While telehealth once presented hurdles in user-friendliness and cost, it has evolved to offer intuitive user interfaces and cost-efficient services. Modern telehealth systems integrate smoothly with electronic health records (EHRs), affording secure and effective communication channels. The return on investment in telehealth is evidenced by reduced overhead costs, heightened patient satisfaction, and broadened access to healthcare services.

A Path to Telehealth Excellence with OpenTelemed

1 — Step 1: Understanding Telehealth

As healthcare evolves, OpenTelemed positions itself as a beacon of advancement by offering a comprehensive digital telehealth platform. The initial step in our journey begins with understanding the true potential of telehealth. This phase involves educating both medical professionals and patients about the technological capabilities, such as secure appointment booking and patient portals, which are integral to modern healthcare delivery.

OpenTelemed ensures that participants are well-versed in industry guidelines from reputable bodies like the Human Health Services and the Office of Inspector General. This foundational knowledge is crucial as we move forward into the integration and practical application of telehealth services, safeguarding both provider and patient interests.

2 — Step 2: Joining OpenTelemed

After gaining a clear understanding of telehealth, participants are invited to join the OpenTelemed network, inclusive of all levels of medical professionals from medical assistants to nurse practitioners and beyond. Our platform not only enables providers to dispense exceptional healthcare remotely but also supports the full spectrum of their practices through streamlined billing and insurance processes.

Moreover, OpenTelemed's collaboration with network partners such as non-profit hospitals and FCC networks warrants a consistent flow of 200-500 patients per month, thereby offering a robust start to practitioners keen on harnessing the power of telehealth. The comprehensive telehealth training provided ensures that each practitioner is equipped to deliver quality care in this evolving field.

3 — Step 3: Transforming Healthcare Delivery

Integration into OpenTelemed marks the beginning of a transformative healthcare experience. Practitioners can anticipate engaging in a proactive approach to healthcare that emphasizes preventive care, vastly capable of managing common health concerns through remote consultations. This step is not merely about treating ailments but also about embarking on an educational endeavor to enrich one's practice with holistic medicine, lifestyle counseling, and other health-promoting disciplines.

Furthermore, our setup streamlines the transition so that practitioners can focus on care delivery without being hindered by the financial and logistical intricacies that often accompany independent practice. OpenTelemed's affordable and simplified setup, paired with a promise of substantial volume and flexible scheduling, empowers healthcare providers to become pioneers in telehealth, contributing valuably to a healthier nation.



Unlock the Potential of Telehealth

Expansive Impact

The surge of telehealth has revolutionized healthcare, extending services into remote areas and ensuring that even those far from urban centers have access to top-tier medical advice. With telehealth, geographic limitations vanish, and comprehensive care extends to the farthest reaches of the nation—empowering a wider demographic with life-changing medical consultations.

In an age where specialist access can be scarce, telehealth opens a portal to a previously unattainable level of convenience and efficiency. Patients can now engage with healthcare specialists from different domains without the burden of travel, harnessing the full spectrum of medical expertise available, all within the comfort of their own home.



Cost-Effective Solutions

Telehealth isn't just about broadening the scope of care—it's about doing so cost-effectively. By circumventing traditional overhead costs of physical practices, telehealth is able to minimize expenses without compromising on care quality. This financial efficiency not only provides solace to the healthcare system but also translates into reduced costs for patients—a win-win for all parties involved.

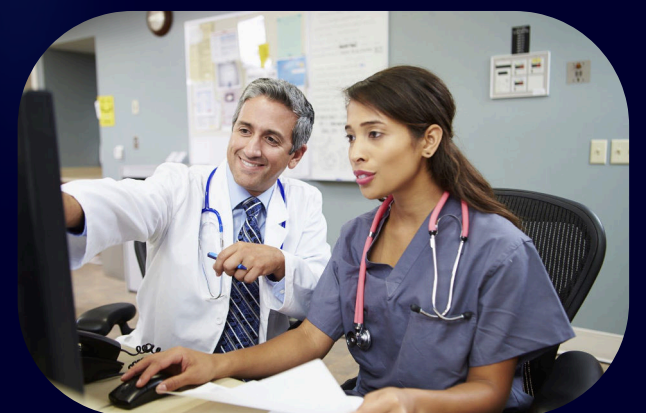
Moreover, the convenience of telehealth care reduces the economic impact of healthcare on patients' lives. With appointments just a click away, the time and money once spent on commuting can now be allocated towards recovery and well-being.



Advancing Practitioner Expertise

Telehealth is a conduit for continuous medical education and growth. Physicians and patients alike benefit from a platform that promotes knowledge sharing and collaborative problem solving. Doctors in remote or rural locales are no longer siloed; telehealth facilitates peer discussion and consultation in a manner previously constrained by locale.

This constant flux of information doesn't just elevate the quality of care; it propels the healthcare sector forward, creating a think tank of shared experiences and expertise that crafts a more robust medical community, prepared to tackle the diverse and complex health challenges of today's world.



Data Collection: Enhancing Telehealth Services

Comprehensive Patient Information

Gathering detailed patient information is a cornerstone of an effective telehealth service. OpenTelemed's platform ensures a meticulous collection of patient data, ranging from medical history to lifestyle choices. This granular approach facilitates tailored care plans, enhances diagnostic accuracy, and fosters a rich repository of records. Accurate and extensive data underpin a robust foundation for telehealth practitioners to deliver care that is both personal and precise.

Technology-Driven Data Accuracy

At OpenTelemed, we embrace cutting-edge technologies to guarantee data integrity. Our digital platform employs advanced algorithms and encryption to secure data transmission, thereby minimizing errors and maintaining the confidentiality of patient information. Such technological fortification not only streamlines the workflow for healthcare providers but also instills confidence in patients concerning the reliability and safety of their health data in the virtual realm.

Analytics for Improved Outcomes

Data analytics is instrumental in transforming raw patient data into actionable insights. OpenTelemed integrates sophisticated analytics tools to analyze patient data, revealing patterns and trends that can inform preventive care strategies. These insights can lead to a decline in readmission rates, better management of chronic diseases, and overall improved patient outcomes. Furthermore, analytics aids in resource optimization, ensuring a broad reach and operational efficiency.

Data Analysis: Uncovering Insights for Strategic Decisions



Identifying Patterns

Data analysis is crucial in recognizing the underlying patterns within large datasets. By scrutinizing these patterns, businesses can predict future trends, understand customer behavior, and make informed decisions. High-quality data visualization, such as line graphs representing sales trends or heat maps reflecting customer activity, can illuminate these patterns in a clear and actionable way.



Predictive Power

The ability to forecast future scenarios is a significant advantage provided by data analysis. Using sophisticated algorithms and models, companies can simulate potential outcomes and strategize accordingly. This predictive aspect is not just about foreseeing risks but also about identifying potential opportunities, allowing for a proactive rather than reactive approach to business planning.



Statistical Insights

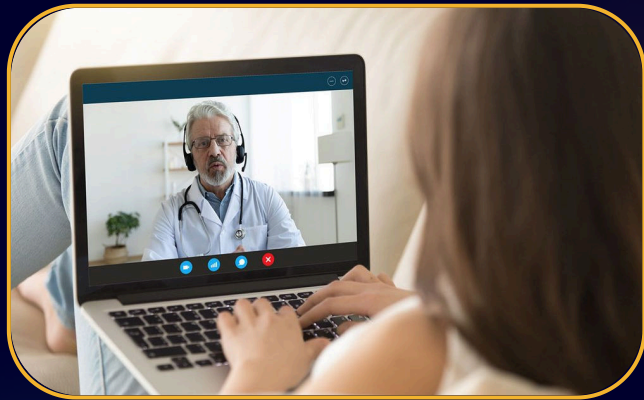
Advanced statistical methods unearth insights that can guide strategic decision-making. By using complex statistical techniques such as regression analysis or chi-square tests, analysts can validate hypotheses and measure the impact of various factors on business performance. Accurate interpretation of statistical data drives efficiency, reduces waste, and improves outcomes across all industries.



Strategy Development

Data analysis is fundamental to developing robust business strategies. By turning data into actionable intelligence, organizations become more agile and customer-centric. This strategic advantage empowers businesses to outmaneuver competitors by offering evidence-based solutions that resonate with market needs and drive sustainable growth.

Results



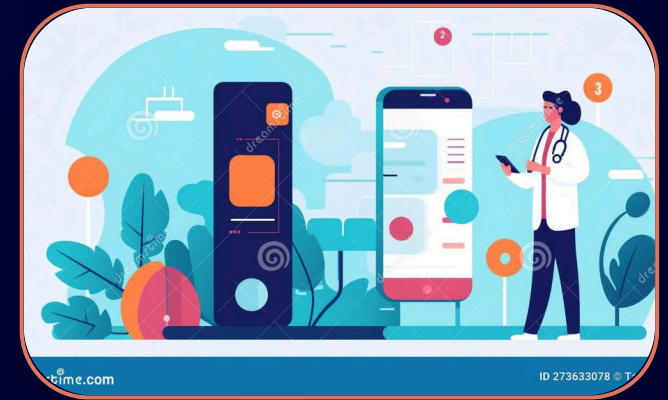
Exceptional Patient Outcomes

At OpenTelemed, we prioritize patient health and satisfaction. Our platform has been instrumental in delivering high-quality care remotely, leading to exceptional patient outcomes. Through our comprehensive digital telehealth solutions, patients receive timely and expert medical attention, ensuring their wellness and recovery are managed with the utmost efficiency.



Interprofessional Collaboration

The essence of OpenTelemed's success lies in fostering a community where healthcare professionals collaborate effortlessly. By leveraging our state-of-the-art digital tools, physicians, nurses, and specialists from diverse backgrounds unite to provide integrated care plans, enhancing the overall telehealth experience and streamlining patient management across disciplines.



Accessibility and Convenience

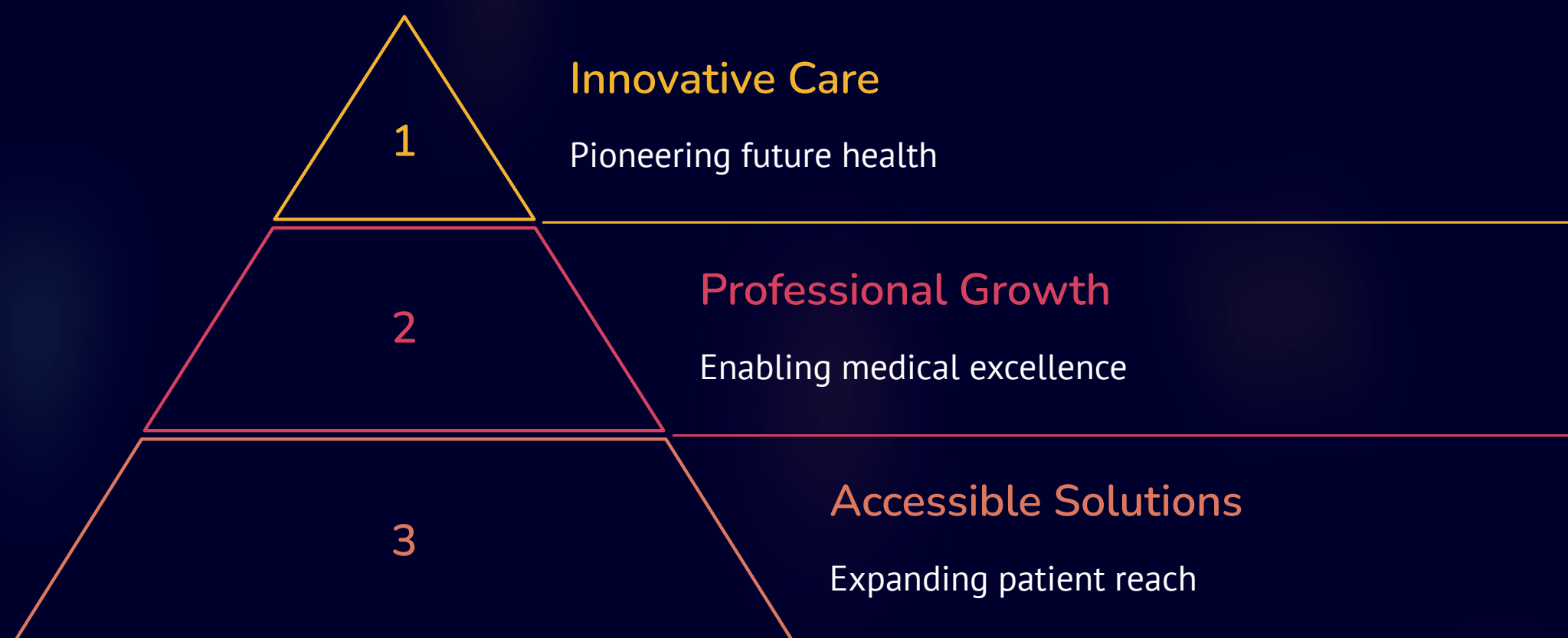
In today's fast-paced world, OpenTelemed has become synonymous with accessible health care. Our platform empowers patients to manage their health proactively from the comfort of their homes or on the move. This accessibility has revolutionized how health services are rendered, making healthcare routines more manageable and less intrusive, evidently increasing patient engagement and treatment adherence.

Unlocking the Potential of Telehealth

- **Comprehensive Care Delivery:** OpenTelemed revolutionizes patient care by offering a seamless digital platform, simplifying the process of booking appointments to accessing medical records. Their holistic approach includes not just medical services but also preventive care through lifestyle changes and holistic medicine.
- **Partnerships and Accessibility:** In collaboration with network partners such as insurance TPAs, FCC network, and non-profit hospitals, OpenTelemed facilitates a steady stream of patients who can benefit from telehealth initiatives—expanding healthcare access to underserved communities.
- **Breaking Barriers in Telehealth:** OpenTelemed addresses common misconceptions head-on, providing evidence-based responses that refute myths about telehealth—such as its effectiveness, cost, complexity, and impact on doctor-patient relationships. Through education, they promote a clearer understanding of telehealth's true capabilities.
- **Economical and Efficient Practice Setup:** Reducing the financial barriers to entry for telehealth practitioners by offering comprehensive resource packages at a fraction of standard costs, OpenTelemed empowers medical professionals to focus on care provision rather than be bogged down by overhead and administrative concerns.
- **Transformative Career Opportunities:** Medical practitioners yearning for autonomy, continuous learning, and a balanced lifestyle will find in OpenTelemed a pathway to fulfilling these aspirations. By providing the tools and training necessary, professionals are encouraged to join and thrive in telehealth practices.

Conclusion

As we reflect on the exciting journey through OpenTelemed's impactful, comprehensive telehealth solutions, it's essential to recognize the pivotal role this transformative platform plays in advancing healthcare. Embracing telehealth is more than an innovation; it's a gateway to greater healthcare accessibility, efficiency, and empowerment for medical practitioners and patients alike.



At the apex of our pyramid is 'Innovative Care', which symbolizes OpenTelemed's commitment to pioneering the future of health with cutting-edge telehealth technologies. As we descend the pyramid, we encounter 'Professional Growth'—a testament to the numerous opportunities for medical professionals to enhance their skills and extend their reach. Grounding our pyramid is 'Accessible Solutions', reflecting the organization's dedication to expanding patient reach and democratizing healthcare.

This synthesis of innovation, professional development, and accessibility is not an endpoint but a continuous process. OpenTelemed's model presents a vivid roadmap for telehealth adoption, setting up practitioners to thrive in the digital health ecosystem while fostering a robust infrastructure for patients to receive quality care.

Today, we stand at the cusp of a healthcare revolution, one which OpenTelemed navigates with ease, debunking myths and optimizing telehealth practice. The future is bright for those who join this journey, a future where health transcends boundaries, and care becomes a seamless, unified experience. Join OpenTelemed in shaping this future, as we endeavor to uplift health standards, one community at a time.

Embark on Your Telehealth Journey

1

Step 1: Complete Your Application

Begin your pathway to joining OpenTelemed by filling out a comprehensive application form. Your credentials are critical to your success, and our platform ensures they are verified through the FCC.gov portal. We prioritize accuracy and efficiency, targeting a 24-hour turnaround for verification. This first step establishes the foundation of your telehealth practice and is designed to be seamless and straightforward.

Detailed instructions and an intuitive interface guide you through this process, ensuring your peace of mind. Once submitted, your application is swiftly processed to move you to the next stage of your telehealth career without delay.

2

Step 2: FCC Certification and Practice Setup

Upon validation of your credentials, you'll receive an FCC certificate featuring a unique practice ID, signaling your entry into the world of telehealth. This milestone moment is accompanied by an online agreement and patient consent forms to formalize your commitment to providing exceptional telehealth services.

Your journey then advances to our training program, offering you comprehensive resources and support. You'll gain access to your personalized practice dashboard, where you can track your progress and view your expected timeline. With your unique ID and dashboard, you'll start to visualize the impact you can make in the lives of patients from the comfort of your telehealth office.

3

Step 3: Launch Your Telehealth Practice

Armed with knowledge and backed by OpenTelemed's robust platform, you're now ready to embark on your telehealth practice. Begin consulting with patients, utilizing our encrypted digital suite for seamless appointment booking, EMR access, and patient portal interactions. Tailored training ensures you are adept in providing expert care from the outset.

Your journey doesn't end at launch; continuous support and a dedicated contact point allow for ongoing dialogue to overcome any challenges and strategize for success. As you grow your practice, you'll enrich lives with vital healthcare services, achieving personal success while fostering a healthier nation.

Streamlining Telehealth Setup

1

Verify Credentials

2

FCC Certification

3

Training & Onboarding

Embarking on the path of telehealth practice carries the promise of professional freedom and the power to make an impact on patient health without geographic constraints. As OpenTelemed, we have meticulously crafted a streamlined process to kickstart your telehealth practice efficiently and intricately designed to remove the usual friction points of entry into the digital health space.

The journey begins with comprehensive credential verification, a safeguard and a testament to the highest standards of our platform. Once this essential step is meticulously completed, we progress towards obtaining your FCC certification—a critical badge of legitimacy and operational readiness in this regulated field. This process ensures that you're recognized as a credible provider, positioned to deliver care with confidence.

Upon crossing these initial milestones, OpenTelemed immerses you into our comprehensive training network—a unique blend of technical onboarding and insightful learning to familiarize you with our cutting-edge telehealth technology. These tailor-made sessions enable practitioners to wield the full potential of our digital health tools, ensuring a smooth transition into your new virtual practice environment.

Now, let us cast aside any hesitation and dive into the world of telehealth with OpenTelemed as your trusted partner. An engaging and rewarding practice awaits—the world, indeed, is waiting for your invaluable contribution.

Future Research

132.8K

Medical Professionals Needed

With the growing demand for telehealth services, the estimation of required medical professionals stands at 132,800 to adequately serve the expanding patient base.

199.2M

Population Served

Research predicts that telehealth has the potential to cater to about 199.2 million people, focusing on preventive care and management.

75%

Disease Prevention

Studies highlight the remarkable potential of preventive care routines in telehealth, which could avert up to 75% of life-threatening diseases and deaths.

\$494.4K

Top Earnings

The income spectrum for telehealth practitioners can peak at an impressive \$494,400 annually, showcasing the lucrative side of this innovative healthcare delivery method.

Envisioning the future landscape of telemedicine, it is paramount to further research into the scalability and integration of telehealth platforms across various demographics. This includes understanding the full impact telehealth can have on diverse populations, ranging from urban to rural, while identifying the barriers that may prevent equitable access.

The anticipated need for more than one hundred thousand healthcare professionals to engage in telemedicine represents a significant shift in healthcare delivery, one that requires comprehensive training and support systems. Future research must delve into educational methodologies and the development of robust technological infrastructures that can sustain the increasing patient load while maintaining quality care.

Moreover, the promising statistic that telehealth could prevent three-quarters of severe health issues necessitates further investigation into which practices yield the most effective results. This could potentially guide how telehealth services are structured, ensuring they are equipped to offer the most impactful interventions.

Lastly, the financial aspects of telehealth cannot be overlooked. The potential earnings for telehealth practitioners suggest a thriving field, but there is a need to understand better how compensation models affect healthcare delivery and the uptake of telehealth services by professionals from varied specialties. As such, research focused on economic incentives and cost-saving mechanisms will play an irreplaceable role in shaping the future of telemedicine.

Acknowledgements

As we stride ahead on the path of innovation and excellence, OpenTelemed wishes to express heartfelt gratitude to those who fuel our journey with their unwavering support and shared vision. It is not just technology but collaboration and partnership that form the cornerstone of the quality telehealth services we provide.

We acknowledge our network partners, whose trust and cooperation have been indispensable. Insurance TPAs, the FCC network, and non-profit hospitals are more than partners; they are integral to the holistic healthcare ecosystem we endeavor to enhance. Their offering of patient care opportunities is crucial for advancing telehealth accessibility and effectiveness.

Our thanks also extend to the dedicated team of physicians, nurses, and healthcare professionals, for whom patient care is not just a profession but a calling. Their embrace of our comprehensive telehealth platform demonstrates a commitment to healthcare innovation, ensuring that cutting-edge technology and compassionate care go hand in hand.

Let us not forget the encouragement received from federal agencies and their guidelines, which have shaped our policies and procedures, holding us to the highest standards of accountability and integrity. OpenTelemed stands as a testament to what can be achieved when we align our efforts with the larger objective of universal healthcare. Together, we are not just building systems; we are nurturing healthier communities and forging a brighter future for telemedicine.



Enhancing Healthcare: The Telehealth Revolution

The advent of telehealth has redefined the frontiers of healthcare, making it more accessible and efficient than ever before. Telehealth bridges geographical divides, connecting patients and medical professionals irrespective of location. At **OpenTelemed**, we emphasize the transformative nature of telehealth. Our cutting-edge platform is a testament to the synergy between technology and medical expertise, fostering unmatched patient care services.

The Dawn of a New Era in Medical Consultation

OpenTelemed's digital platform is not just an application; it represents the pinnacle of a comprehensive telehealth ecosystem. With our fully encrypted website and apps for iOS and Android, patients are afforded the luxury of a seamless healthcare experience. The features we offer—ranging from EMR integration to collaborative physician portals, and insurance credentialing—culminate in a sophisticated yet user-friendly milieu that caters to both the needs of the healthcare provider and the patient community.

Our network's expansion is strategic and inclusive, involving insurance TPAs, FCC networks, and non-profit hospitals. These partnerships not only support the healthcare provider's reach but also ensure a constant stream of telehealth opportunities, bridging the gap between medical services and patient needs.

Telehealth: Deconstructing Myths and Celebrating Potential

Dispelling myths about telehealth is a cornerstone of our advocacy. Despite misconceptions, telehealth has a rich history dating back to the 1960s. It transcends the limitations of urgent care, extending into routine checks, specialty consultations, and mental health. Each of these services bears the hallmark of expertise, with professionals who are board-certified and adept at navigating the nuances of remote care delivery.

Cost and complexity are often cited as barriers, yet our efficient infrastructure subverts these notions, making telehealth an affordable and streamlined reality. Moreover, contrary to the belief that telehealth could weaken the doctor-patient relationship, it instead enhances connections by tailoring care to meet the unique needs of each patient.

In an ever-evolving healthcare landscape, OpenTelemed stands ready to partner with those who envision a future where telehealth is integral to public health. Our platform is designed not just for healthcare provision but also as a crucible for holistic medicine, lifestyle coaching, and overall well-being. We extend an invitation to medical assistants, nurses, dietitians, and even students to become part of a movement that prioritizes health, accessibility, and innovation.

Executive Summary

1. **Comprehensive Telehealth Solution:** OpenTelemed offers a complete digital healthcare platform, featuring a secure website and mobile apps for iOS and Android, integrated with essential services such as EMR, patient portals, appointment bookings, and more.
2. **Expert Network and Partnership:** Aligning with key players like insurance TPAs, FCC networks, and nonprofit hospitals, OpenTelemed expands telehealth access, connecting upwards of 200-500 patients to care providers each month.
3. **Eligible Practitioner Engagement:** A wide array of healthcare professionals, including physicians, nurses, dietitians, life coaches, and even students, are welcomed to join OpenTelemed, reinforcing the mission of providing comprehensive health services.
4. **Telehealth Myths Dispelled:** Challenging misconceptions, OpenTelemed emphasizes the longevity, versatility, efficacy, simplicity, and cost-efficiency of telehealth, advocating its potential to enrich the doctor-patient dynamic.
5. **Professional Fulfillment Support:** Addressing common obstacles faced by telehealth practitioners, such as overhead expenses and complex insurance processes, OpenTelemed facilitates practice with minimal barriers to entry and substantial potential earnings.

Embracing Telehealth: Leveraging Technology for Efficient Healthcare

The Myths and Realities of Telehealth

It's common to encounter skepticism when innovative technologies transform traditional industries, and telehealth is no exception. Despite being a burgeoning field, telehealth is shrouded in myths that often cloud its perceived value. One such myth claims that telehealth is a nascent development. The truth, however, is far richer—telehealth's roots extend back to the 1960s, demonstrating its enduring presence and evolution. Stepping into the future, OpenTelemed debunks these myths, shining light on the reality of telehealth as an established, effective, and essential aspect of modern healthcare.

Another misconception is that telehealth primarily serves urgent care scenarios, when, in reality, it encompasses a vast range of medical services. From chronic healthcare management to mental health support, the scope of telehealth is vast and versatile, challenging the limited view that confines it to immediate or emergency care needs.

The Promise of Telehealth: Accessibility and Affordability

OpenTelemed is not just debunking misconceptions; it's revolutionizing them into a narrative of empowerment and efficiency. The third myth concerns the effectiveness of telehealth in comparison to traditional face-to-face medical consultations. OpenTelemed, through its usage of state-of-the-art digital platforms manned by credentialed professionals, ensures that patients receive quality care consistently. This sets a new benchmark in healthcare, as OpenTelemed's platforms demonstrate that telehealth can achieve outcomes on par with, if not superior to, in-person care.

When it comes to costs and complexity, the simplicity and cost-effectiveness of OpenTelemed's services stand testimony against the myth that telehealth is an expensive and complicated endeavor. By offering a sophisticated yet user-friendly telehealth platform, OpenTelemed is making healthcare more approachable and affordable than ever before.

Enhancing Patient-Practitioner Relationships

The fifth myth posits that telehealth could disrupt the sacred doctor-patient relationship. However, OpenTelemed's approach turns this concern on its head, using technology as a bridge rather than a barrier. Telehealth, with its convenience and accessibility, fosters better communication and more frequent touchpoints. This can lead to stronger, more informed, and more collaborative relationships between healthcare providers and patients, who can enjoy the comfort and privacy of their own homes while receiving care.

By highlighting these myths and presenting the substantiated truths, OpenTelemed seeks to inform, assure, and invite professionals across industries to join a healthcare movement that's not just changing lives, but potentially saving them through accessible and affordable care.

The Future of Healthcare: The OpenTelemed Advantage

1. Revolutionizing Patient Care

OpenTelemed is redefining healthcare by offering accessible telehealth services that bridge the distance between medical professionals and patients. By enabling efficient online consultations, OpenTelemed ensures that high-quality healthcare is just a click away, providing comfort and convenience for patients across the country.

2. Tailored Telehealth Solutions

With a complete digital platform including encrypted communication, OpenTelemed caters to every aspect of modern healthcare. This includes appointment booking, electronic medical records, and a patient portal, ensuring a seamless and secure experience for both patients and providers.

3. Comprehensive Support System

From collaborative physicians to billing contractors and insurance credentialing, OpenTelemed takes the complexity out of telemedicine. Practitioners are empowered with comprehensive telehealth training, and a commitment to facilitate 200-500 patient consultations per month, thereby fostering both professional growth and exceptional patient care.

4. A Unified Network of Care

OpenTelemed's expansive network, which includes insurance TPAs, FCC network partners, and non-profit hospitals, supplies a consistent stream of patients seeking telehealth services. This extensive collaboration not only extends the reach of telemedicine but also promotes a robust, interconnected healthcare ecosystem.

The Telehealth Onboarding Process at OpenTelemed

1 — Step 1: Application Submission

Embarking on your OpenTelemed journey begins with a straightforward application process. Prospective telehealth practitioners are required to submit an application form, found on the OpenTelemed website, to initiate their partnership with us. The form is designed to capture essential details, including your qualifications, areas of specialization, and reasons for pursuing telehealth.

During this stage, we prioritize getting to know you and understanding your aspirations. Our goal is to ensure that OpenTelemed's platform aligns with your practice goals and together, we can extend equitable and quality healthcare services across the digital landscape, reaching patients far and wide.

2 — Step 2: Credential Verification & Training

Following your application, we conduct a thorough verification of credentials against the FCC.gov portal. This meticulous process typically takes about 24 hours and is crucial for maintaining the high standards of service associated with OpenTelemed. Upon successful verification, practitioners are awarded an FCC certificate, complete with a unique practice ID signifying their official entry into our telehealth community.

Concurrently, you gain access to comprehensive telehealth training modules. This formative step is key, designed to equip you with the latest tools and methodologies prevalent in the telehealth industry. Our training encompasses technical know-how, patient communication skills, and effective business strategies, so that you can navigate the telehealth ecosystem with confidence and finesse.

3 — Step 3: Setting Up Your Telehealth Practice

The final leap into establishing your telehealth practice is facilitated by the OpenTelemed support system. You'll be guided through setting up your digital dashboard, a user-friendly interface where you can monitor the progress of your practice setup. Each aspect, from live chat support to patient management, is streamlined for your convenience.

You will also be introduced to your Single Point of Contact - a dedicated OpenTelemed representative who will assist you with any challenges that arise. Their support ensures your transition into telehealth is smooth and stress-free. With your practice ready, you can begin administering quality care and consultation to patients, marking the start of an impactful and rewarding journey with OpenTelemed.

Why Join OpenTelemed?



Comprehensive Digital Telehealth

Our state-of-the-art digital telehealth platform is the cornerstone of our services, offering an integrated encrypted website and mobile applications for iOS and Android. Health professionals can streamline their workflow with tools like direct appointment booking, digital EMR, and a tailored patient portal. Together, these features create an efficient and secure telemedicine experience for both providers and patients.



Extensive Training & Support

Your journey to becoming a seasoned telehealth practitioner is supported every step of the way with OpenTelemed's comprehensive training programs. Our training covers everything from preventive care management to holistic medicine, empowering you with knowledge and skills to excel in the telehealth domain while contributing to a healthier nation.



Pioneering Medical Community

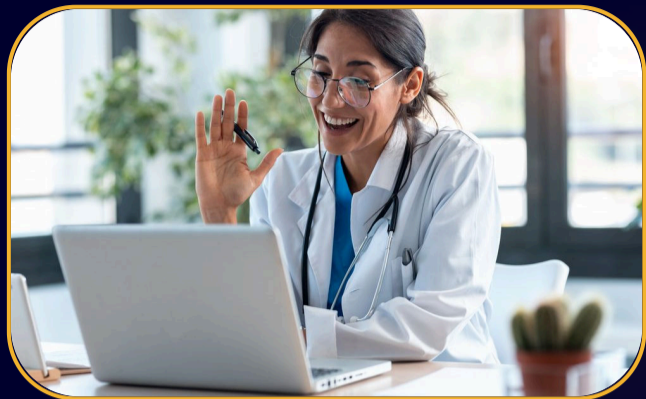
Join a diverse and dynamic community of passionate medical professionals who are at the forefront of telemedicine. At OpenTelemed, you'll connect with medical assistants, RNs, dietitians, life coaches, and more, fostering an inclusive environment that values collaboration and shared success in delivering exceptional telehealth services.



Cost-Effective Practice Setup

Eliminate the roadblocks of high out-of-pocket costs for compliance, licenses, and insurance billing with our cost-effective setup. For just \$600 per year, we subsidize the complete setup, enabling practitioners to operate their own practice with minimal financial barriers and the commitment of a substantive patient volume each month.

Methodology



State-of-the-Art Digital Platforms

With an unwavering commitment to providing top-tier telehealth services, OpenTelemed has meticulously developed a comprehensive digital platform. This platform includes a highly secure website along with fully-integrated iOS and Android applications. These tools are designed to deliver an intuitive user experience, facilitating appointment booking, electronic medical records (EMR) management, and a patient portal for streamlined communication.



Collaborative Excellence in Healthcare

OpenTelemed encapsulates the spirit of collaboration that is pivotal in modern healthcare. The organization has created an ecosystem where billing contractors, insurance credentialing specialists, and appointment booking representatives work synergistically. This concerted effort ensures that the healthcare delivery is seamless, enabling physicians to focus on their primary duty—patient care—while the comprehensive telehealth training equips them with the necessary skill set to operate confidently within the digital healthcare space.

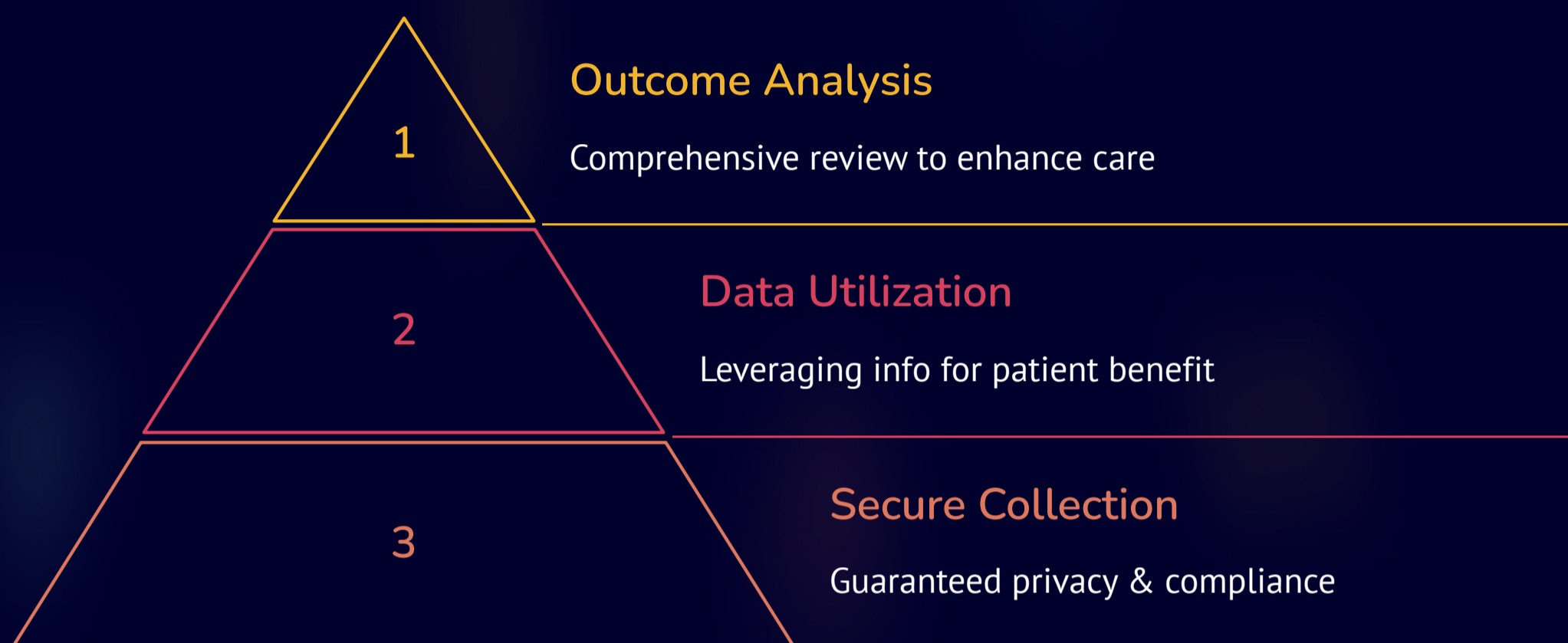


Robust Network Support and Training

Powering the backbone of OpenTelemed's operations is a robust network of partners, including insurance TPAs, FCC networks, and non-profit hospitals. These alliances not only secure a steady stream of patients for telehealth services but also manifest OpenTelemed's dedication to expanding healthcare access. The training programs offered by OpenTelemed are meticulously designed to encompass telehealth, lifestyle management, and holistic medicine, thus preparing practitioners to take a comprehensive approach to health and wellness, and ultimately contribute to building a healthier nation.

Data Collection in Telehealth

Understanding data in telehealth is crucial to success. A comprehensive strategy involves several layers, from ensuring security at the foundational level to analyzing outcomes for continuous improvement. The pyramid below illustrates how an effective data collection process can build a robust telehealth practice.



In this era, where data is king, successful telehealth relies on the meticulous collection and usage of patient information. Secure collection forms the base of our data pyramid. OpenTelemed ensures the integrity of patient data through encrypted platforms that adhere to guidelines by the Federal Communication Commission and regional telehealth resource centers. This foundational layer sets the stage for all consequent steps.

Upon this base, we utilize this data not as an end, but as a means to elevate patient care. Intelligent algorithms make sense of numbers and texts, transforming them into actionable insights which directly contribute to improved health outcomes. Data utilization employs analytics to anticipate patient needs, streamline appointment bookings and enhance the utility of EMRs and patient portals.

The pinnacle of our measure leads to outcome analysis. This is where data truly shines in its potential to revolutionize healthcare. By thoroughly analyzing health outcomes, OpenTelemed is not merely reactive but proactive in healthcare provision. This extends from enabling predictive care for individuals to optimizing health trends across populations. Reviewing outcomes leads to continuous quality improvements, trailblazing advancements in telehealth services.

Such a structured approach is fundamental for all industry professionals looking to stand out in the ever-evolving landscape of digital healthcare. With OpenTelemed, practitioners receive the backing they need to navigate this complex yet rewarding terrain.

Data analysis: Revolutionizing Decision- Making

1

Collecting High-Quality Data

Data analysis begins with the meticulous collection of high-quality data. In today's digitized world, this means gathering data from a variety of sources such as customer interactions, online transactions, social media, sensors, and more. Only with accurate and relevant data can organizations hope to glean insights that drive strategic decisions. Rigorous data collection methods set the foundation for any successful data analysis endeavor, ensuring that the subsequent insights are reliable and meaningful.

To ensure the integrity of data, professionals utilize advanced tools that not only capture the requisite data but also filter out noise and irrelevant information. This step is crucial because the quality of data directly influences the outcomes of the analysis, and ultimately, the strategic decisions made by the organization.

2

Processing and Transformation

Once data is collected, the next step involves processing and transforming it into a consistent format ready for in-depth analysis. This stage may involve cleaning data to remove duplicates or errors, and normalizing data to ensure comparability across different datasets.

Sophisticated software and algorithms are employed to manage and refine massive volumes of data efficiently.

Transformation includes converting data into a structured form, categorizing and indexing it to streamline the analysis process. This step is critical in shaping raw data into a ready-to-analyze dataset that will yield the most accurate insights. Professionals might also use this stage to anonymize data, protecting individual privacy while still retaining valuable information for analysis.

3

Analytics and Interpretation

The heart of data analysis is the application of statistical models and algorithms to decipher patterns, correlations, and trends. Analytical tools range from basic descriptive statistics that summarize data to complex predictive and prescriptive analytics that forecast future trends and suggest actions. Mastery in interpreting the output of these tools is vital for professionals, as it translates to insights that can inform robust decision-making.

Interpretation extends beyond merely understanding the statistical output; it involves contextualization within the organization's strategy, goals, and market environment. Analysts not only report on what the data is showing but also on what this means for the organization. They articulate findings in a way that stakeholders can understand and act upon, often through detailed reports or dynamic dashboards that illustrate key findings succinctly.



Results

1

Increase in Patient Volume

From 200 to 500 patients monthly

2

Telehealth Accessibility

Expanded reach to 199.2 million people

3

Affordability and Value

Just \$600 for a full year contract

4

Income Potential

Up to \$494,400 annually for practitioners

OpenTelemed has revolutionized digital healthcare by meticulously addressing the challenges faced by practitioners in telehealth. Our platform's growth from serving 200 to a staggering 500 patients per month testifies to the effectiveness and demand of virtual care. This momentous increase not only showcases our capabilities but also extends our mission of making telehealth available to the broader population, potentially reaching 199.2 million individuals in need of preventive care management.

Our commitment to breaking barriers in telehealth extends to pricing structures that defy industry norms. At OpenTelemed, we believe financial limitations should not hinder access to quality care; hence, we have priced our yearly contract at an accessible \$600. This fee encompasses a vast array of services including a comprehensive telehealth platform with full features, training, and consistent patient volume—a game-changer for those seeking to establish or expand their practice.

Furthermore, OpenTelemed has opened a gateway for practitioners to realize their earning potential. With the average income for telehealth professionals ranging dramatically, our platform has consistently seen practitioners reach the higher end of the spectrum, indicating that with the right tools and support, lucrative telehealth practices are well within reach. This unprecedented opportunity for financial stability and growth is a testament to the value that OpenTelemed brings to the healthcare industry.

Key Telehealth Statistics

199.2M

Population Served

Telehealth has the capacity to significantly impact preventive care, serving an estimated 199.2 million people.

132.8K

Professionals Needed

Approximately 132,800 medical professionals are required to address the healthcare demands of the population considering telehealth services.

75%

Disease Prevention

Telehealth holds the potential to prevent up to 75% of life-threatening diseases and deaths through routine exams and care.

\$600

Yearly Contract

For an accessible fee of \$600 per annum, OpenTelemed offers an extensive setup to support practitioners' telehealth endeavors.

Understanding the magnitude of telehealth, OpenTelemed addresses the capability of digital healthcare to reach millions, underscoring its role in preventive medicine and routine health management. These figures not only demonstrate the vast scope of individuals who can benefit from telehealth services but also highlight the pressing need for trained medical professionals who can cater to these digital healthcare demands.

The proactive approach in disease prevention is especially notable, as it indicates how telemedicine can dramatically reduce the incidence of critical health issues with regular monitoring and check-ups. Finally, OpenTelemed's offer reflects their commitment to making telehealth practice accessible and sustainable for healthcare providers, allowing them to join without the burden of exorbitant costs that typically accompany setting up a private practice. This amalgamation of reach, efficiency, prevention, and affordability positions OpenTelemed as a pivotal solution in the landscape of modern healthcare delivery.